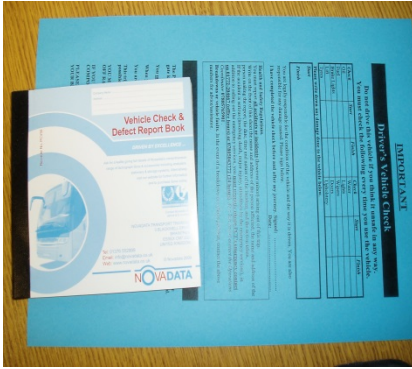


Operation instructions of PN10 JSY



It is Your Legal Duty to carry out a walk round check and complete the Defect Report / reverse of the GT Blue sheet. Being a volunteer or arriving at the vehicle late are not excuses. If something goes wrong and you haven't done this, the fault is yours.



VEHICLE LOG SHEET: Please complete for every trip. Date/Name of group/trip/route/ Start and Finish Mileage/Drivers initials.

This data is critical for our monitoring and takes ages to track down afterwards. Thanks.



BONNET RELEASE LEVER: inside passenger door, on side of dash.

Bonnet catch can be found in centre of bonnet: lift lever and pull up, secure with handle on right hand side.



All the tanks to check. In the far left hand corner you can just see a blue cap cover, this is the

- 1) Screen-wash reservoir.
- 2) Coolant / Antifreeze.
- 3) Brake fluid.



Oil dipstick – you'll have to lean in slightly to see it.



PASSENGER SAFETY HANDLES – release lever. There are two at the side door. Pull black button out making sure you hold on with other hand to lower down. To stow it, pull black button out again. **WARNING.** The handle will fall down if released without holding on to it.



AUTOMATIC SIDE STEP: Left **red** button deploys and retracts the passenger side step. Right hand **red** button opens and closes the passenger side door.

GREEN BUTTONS: Internal & loading light. Ensure you switch off.



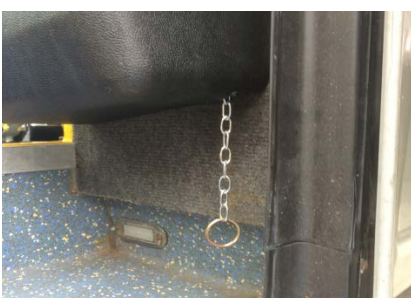
AUTOMATIC SIDE STEP:
Controlled from inside the cab
(see previous picture).

Neither the door nor the step will work if the hand brake is not **FULLY** engaged.



SIDE PASSENGER DOOR: *Do Not Turn The Red Handle Unless It's An Emergency.*

To unlock the side door for normal operation, use the second key on the key ring (not the ignition key), to turn the lock on the inside of this handle.



If you do accidentally turn the red handle, you'll need to **RESET** the door mechanism by sharply pulling the chain underneath the door motor assembly as shown here. Give it a couple of seconds to settle then try again.



TAIL LIFT: Use your foot to lift up the red handle on the side of the lift. Keep this raised while you activate the control stalk...



TAIL LIFT CONTROL: Press the top Up/Out button to deploy the tail lift. Keep pressing up button until lift at the top, unfold lift as per instructions.

To put lift away bring lift to top position and fold away. Press and hold the bottom Down/In to stow.



The maximum weight the tail lift can handle is 350Kgs (55 Stone). That is the combined weight of the person(s) and the chair. Be aware of this max weight limit if a Carer is trying to get on the lift too.



These are all the wheelchair restraints and webbing equipment which should be on PN10JSY – only one set. They are stored in the box at the rear off side of the passenger saloon.



Seat release mechanism. Press silver button in and pull the lever back all the way. Tip seat forward to remove.

To replace seat make sure lever is fully back, front legs are lined up in tracking and place back end in, push lever forward. Test seat is secure by shaking it strongly, before setting off.



Cab Heater switch, press wavy lines button to turn on heat and fan symbol for “ventilation”. Press a second time to turn off. Arrow keys up or down to desired temperature. Switch heater off at end of trip, day and when fuelling.



DIESEL FILLER CAP. Near side.

Ensure that both the engine AND the cabin heater are off when fuelling.

When the first click happens to indicate the tank is full, give it a couple of seconds, then continue fuelling until the second click.



JUMP-START point for the NEGATIVE terminal of the jump pack / leads.

Attach the negative crocodile clip to the screw which is standing proud.



JUMP-START point for the POSITIVE terminal of the jump pack / leads.

You need to unclip this plastic cover to reveal...



...this metal terminal plate, attach the positive crocodile clip to this.



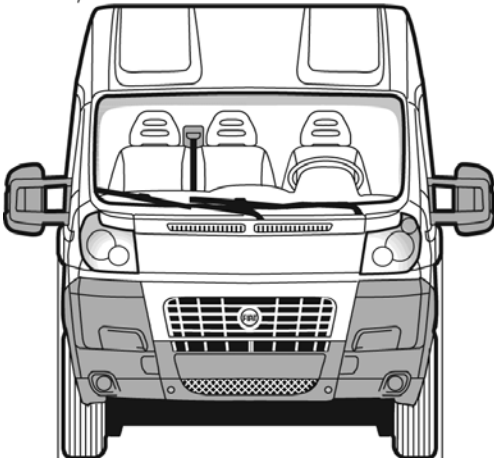
**EXTINGUISHER one is behind and to the left of driver seat. The other is at the rear of the bus near side.
FIRST AID kit above driver on shelf & at rear.**



CLEANING: you can use this brush to sweep off the seats, tracking and floor. This picture shows a storage tray underneath the driver seat.



TYRE SIZE: 225/75 R 16 C.
Tyre Pressure: 55 psi



HEIGHT: 8ft 3in / 2.5 metres.
WIDTH: 6ft 7in / 2 metres.
LENGTH: 20ft 8in / 6.3 metres.