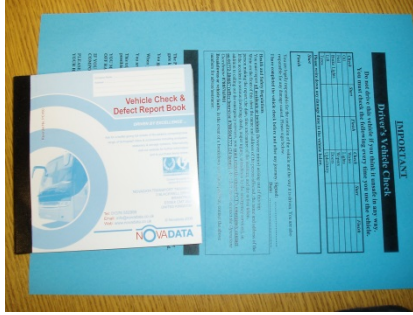


Operation instructions of FJ10RZN



It is Your Legal Duty to carry out a walk round check and complete the Defect Report / reverse of the GT Blue sheet. Being a volunteer or arriving at the vehicle late are not excuses. If something goes wrong and you haven't done this, the fault is yours.



VEHICLE LOG SHEET: Please complete for every trip. Date/Name of group/trip/route/ Start and Finish Mileage/Drivers initials.

This data is critical for our monitoring and takes ages to track down afterwards. Thanks.



Bonnet release lever, inside passenger door, on side of dash.

Bonnet catch can be found in centre of bonnet: lift lever and pull up, secure with handle on right hand side.



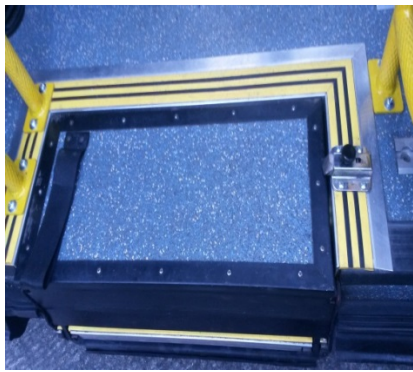
All the tanks to check.

In the far left hand corner you can just see a blue cap cover, this is the screen-wash reservoir. Coolant in front, then brake fluid.



Passenger Handle release lever, pull black button out making sure you hold onto the yellow handle with other hand lower down and lock in, pull black button out to put yellow handle away.

(Warning handle will fall down if released without holding on to it.)



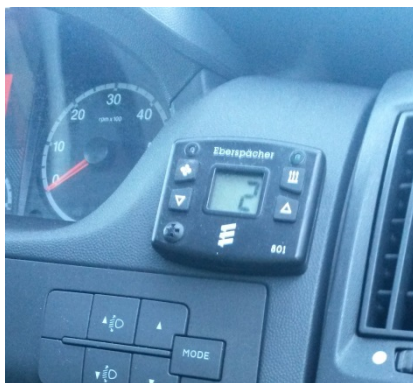
PASSENGER SIDE DOOR STEP.

To open pull black handle on the left while pulling the strap toward you.

WARNING. This is a really heavy piece of kit, keep legs out of the way.



This single switch controls the interior lights. Turn off when not in use (shown here in the off position).



CAB HEATER SWITCH: press wavy lines button to turn on heat and fan symbol for “ventilation”. Press a second time to turn off. Arrow keys up or down to desired temperature. Switch heater off at end of trip, day and when fuelling.

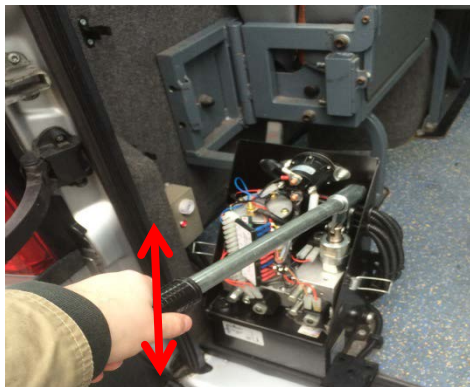


Tail Lift control, press the white Up/Out button to deploy the tail lift. Keep pressing up button until lift at the top, unfold lift as per instructions. To put lift away bring lift to top position and fold away. Press and hold the black Down/In to stow.





The maximum weight the tail lift can handle is 350 Kgs (55 Stone). That is the combined weight of the person and the chair. Be aware of this if a Carer is trying to get on the lift too.



What to do if the power fails to this tail lift. A manual pump for the mechanism.

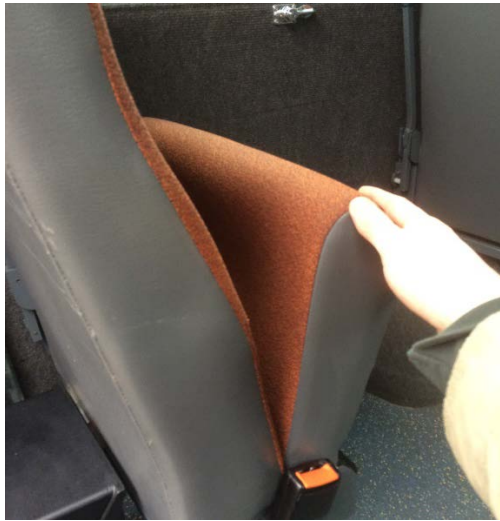
Other vehicles have a similar set-up but may be in a different position inside or outside the vehicle.



These are all the wheelchair restraints and webbing equipment which should be on FJ10RZN. They are stored in the box at the rear off side of the passenger saloon.



SEAT RELEASE MECHANISM. Press silver button in and pull the lever back all the way. Tip seat forward to remove. To replace seat make sure lever is fully back, front legs are lined up in tracking and place back end in, push lever forward. Test seat is secure by shaking it strongly, before setting off.



FOLD AWAY SEATS:

Tip up the front part of the seat.



Get a good hold on the handle as shown and pull firmly towards the front of the bus.

The whole seat will then swing towards the side of the vehicle.

(Ignore the silver clip things, they aren't relevant).



Push it home against the rubber plug.

To unfold the seat just pull it away from the wall and swing it firmly back into position; the seat will drop back down.



DIESEL FILLER CAP. Near side.

Ensure that both the engine AND the cabin heater are off when fuelling.

When the first click happens to indicate the tank is full, give it a couple of seconds, then continue fuelling until the second click.



JUMP-START point for the negative terminal of the jump pack / leads.

Attach the crocodile clips to the screw which is standing proud.



JUMP-START point for the positive terminal of the jump pack / leads.

You need to unclip this plastic cover to reveal...



...the metal terminal plate, attach the crocodile clips to this.



EXTINGUISHER is under front passenger seat. The FIRST AID kit is in a compartment on the centre console, under the gear stick.



CLEANING: you can use this brush to sweep off the seats, tracking and floor. This picture shows a storage tray underneath the driver seat.

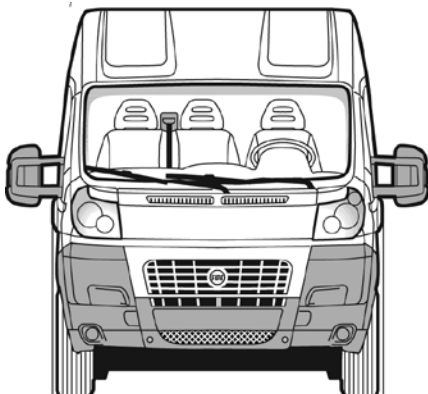


TYRES: This jack is under the front passenger seat and is removed by twisting the small, circular catch at the front left.



TYRE SIZE: 225/75 R 16 C.

Pressure = 55 psi.



HEIGHT: 8ft 14in / 2.8 metres.

WIDTH: 6ft 6in / 2 metres.

LENGTH: 18ft 4in / 5.6 metres.

SIDE ENTRY DOOR – when closing it, you may have to slightly pull it out towards you before sliding it shut.